



**Autonomous Vehicle Simulation (AVS) Laboratory,
University of Colorado**

Basilisk Technical Memorandum

SPACECRAFTSYSTEM

Rev	Change Description	By	Date
1.0	Initial Draft (Module is still IN PROGRESS)	C. Allard	20180613
1.1	Renamed classes to spacecraftSystem and spacecraftUnit	H. Schaub	2020-02-15

Contents

1	Progress Explanation and Current Status	1
2	Model Description	3
2.1	Introduction	3
3	Model Functions	3
4	Model Assumptions and Limitations	3
5	Test Description and Success Criteria	5
5.1	SCConnected Test	5
6	SCConnectedAndUnconnected Test	5
7	Test Results	5
7.1	SCConnected Test	5
7.2	SCConnectedAndUnconnected Test	8
8	User Guide	15

1 Progress Explanation and Current Status

This module is IN PROGRESS and this section lists the current progress and status of the module as capability is added to the module this document needs to be updated. This document should always be describing the current status of the module.

Below is a list describing the limitations and status of the module

- The first major status that needs to be understood is that the HingedRigidBody stateEffector is the only stateEffector at this time that is ready to be used with the multi-spacecraft architecture. The reason that each stateEffector needs to be updated is because it was found with stateEffectors that have multiple degrees of freedom change the generalized interaction between and the individual stateEffectors. However, this change is relatively small to each stateEffector as long as the developer understands the steps to make the change. The architecture is proven to work with hingedRigidBodies and each stateEffector just needs to follow suit.

So in other words, if a stateEffector wants the capability of being able to be simulated in the multi-spacecraft environment some modifications need to be implemented to the specific stateEffectors. The hingedRigidBody stateEffector acts as a detailed example on the method to convert a stateEffector to allow for the multi-spacecraft interaction. Below is a further on how to implement this change:

- The `prependSpacecraftNameToStates()` method needs to be implemented for the corresponding stateEffector states just like `hingedRigidBody` does for its states. This allows for the stateEffector to know about the individual spacecraft units that it is attached to.

- The `linkInStates` method needs to prepend the linked states from the spacecraft it is attached to, to get the corresponding state from the spacecraft. However, it should be noted that you can see the `hingedRigidBody` no longer needs access to the hubs primary state variables. This is because the `backSubstitution` methods now provide the `stateEffectors` with the appropriate Hub states in the method calls. Therefore there is not a need for `stateEffectors` to link to any of the Hubs state variables.
- The last step is to provide the contributions from the `stateEffectors` about point P and frame \mathcal{P} . Again, this cannot be generalized because of multiple degree of freedom effectors so each effector has the job of being provide their contributions about point P and frame \mathcal{P} . It should be noted that if the spacecraft is independent then point B will be coincident with point P and `dcmPB` will be identity. Therefore the math should work for both connected and unconnected spacecraft. Let me explain this in more detail with the `hingedRigidBody`: You can see that in the private variables in `hingedRigidBody`, that the variables have been changed to be point P and \mathcal{P} relative. Again, if single spacecraft is being implemented then frames B and \mathcal{P} are coincident. In the `stateEffector.h` it shows that each `stateEffector` has access to these two crucial variables: `r_BP_P` and `dcm_BP`. `r_BP_P` is defaulted to zero and `dcm_BP` is defaulted to identity. With that knowledge, each `stateEffector` needs to use those variables and defined their contributions about about point P and frame \mathcal{P} . about point P and frame \mathcal{P} . The easiest way to implement this correctly, is to to change any internal variables (hopefully they are already indicated as private variables) to point P and frame \mathcal{P} relative. Therefore, values being set by python shouldn't be changed, but internal variables or intermediate variables should be changed.
- Once a model has been changed to allow for multi spacecraft, it can be tested by using the `test_multi-spacecraft` and add the `stateEffector` to the spacecraft system just like `hingedRigidBodies` are. If energy and momentum is conserved the `stateEffector` most likely was changed correctly. Obviously all other tests should pass.

The following table describes the current status of each `stateEffector` being implemented in the multi-spacecraft environment. This table should be updated as `stateEffectors` have this added capability.

Table 2: Test results.

Test	Pass/Fail	
HingedRigidBodies	Implemented	Tested
LinearSpringMassDamper	Not Implemented	Not Tested
SphericalPendulum	Not Implemented	Not Tested
FuelTank	Not Implemented	Not Tested
VSCMGs	Not Implemented	Not Tested
dualHingedRigidBodies	Implemented	Not Tested
nHingedRigidBodies	Not Implemented	Not Tested

- DynamicsEffectors need the same point P and frame \mathcal{P} relative math to be implemented. This would be done very similar to the hingedRigidBody effectors and once it has been implemented for the stateEffectors the jump to dynamicEffector is small. But as such a current progress table is shown below:

Table 3: Test results.

Test	Pass/Fail	
Thrusters	Not Implemented	Not Tested
ExtForceTorque	Not Implemented	Not Tested
ExtPulsedForceTorque	Not Implemented	Not Tested
dragEffector	Not Implemented	Not Tested
radiationPressure	Not Implemented	Not Tested

- On further evaluation, there is a bug believed to be in spacecraftSystem with the multi-connected hubs. The attached hubEffectors needs to provide their contribution to the primary spacecraft about point P and \mathcal{P} . Just like the other stateEffectors the hubEffector needs to be changed. This should be a small change, but needs to be done! The tests in this document do not show this bug because the contributions are not being added in spacecraftSystem. So to be clear there is a bug in both spacecraftSystem (because the attached hubs are not being looped over) and in the hubEffector (not providing contributions about point P and \mathcal{P}) This is BUG that needs to be fixed.
- The docking and detachment of spacecraftUnit needs to be implemented in the spacecraftSystem class. Currently the docking and detaching could be done using python (by stopping the sim at a specific time step and dock/detach from python) but this is not the intended use of this multi-spacecraft architecture. This NEEDS to be implemented in the spacecraftSystem class that would allow for a message to be written out to the system which would allow for detachment and docking of the spacecraftUnit. The kinematics of the docking locations would need to be taken into account in this docking/detaching method. (DockingData is the struct that holds the docking information of each dock) However, once this method is added, the rest of architecture would allow for the docking and detaching to happen seamlessly. The docking and detaching method should be called at the end of the SpacecraftSystem::integrateState method.
- The interaction between sensors and environment models has yet to be tested for the multi-spacecraft architecture.

2 Model Description

2.1 Introduction

A detailed description of this architecture can be seen in: <http://hanspeterschaub.info/Papers/grads/CodyAllard.pdf>. Figure 1 shows a schematic of what this module is intended to do: simulate multiple spacecraft units at a time that can dock and detach throughout the simulation.

3 Model Functions

The model functions need to be updated once the module has been finalized and fully tested

4 Model Assumptions and Limitations

Please see the first section describing current progress of this module.

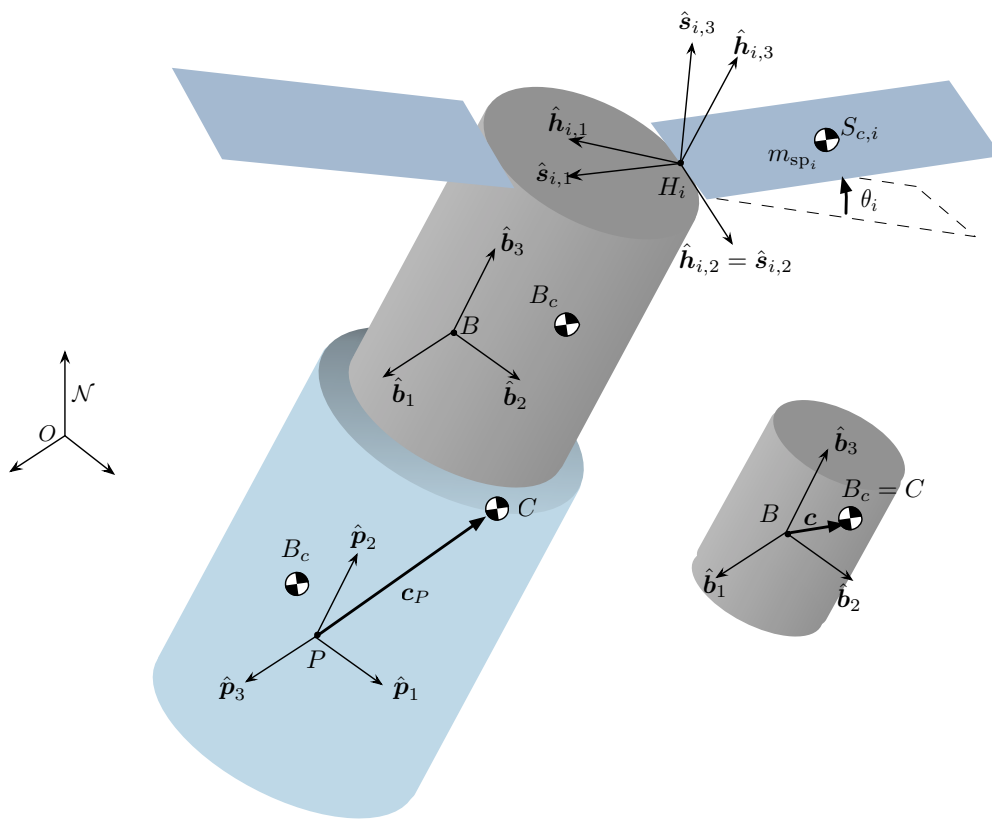


Fig. 1: Complex multi-spacecraft that can be simulated using

5 Test Description and Success Criteria

This test is located in `simulation/dynamics/spacecraftDynamics/_UnitTest/test_multiSpacecraft.py`.

5.1 SCConnected Test

This test ensures that a spacecraft system with hingedRigidBody attached to it conserves energy and momentum.

6 SCConnectedAndUnconnected Test

This test ensures that a spacecraft system with hingedRigidBody attached to it and other unconnected spacecraft can be simulated at the same time and conserve energy and momentum.

7 Test Results

7.1 SCConnected Test

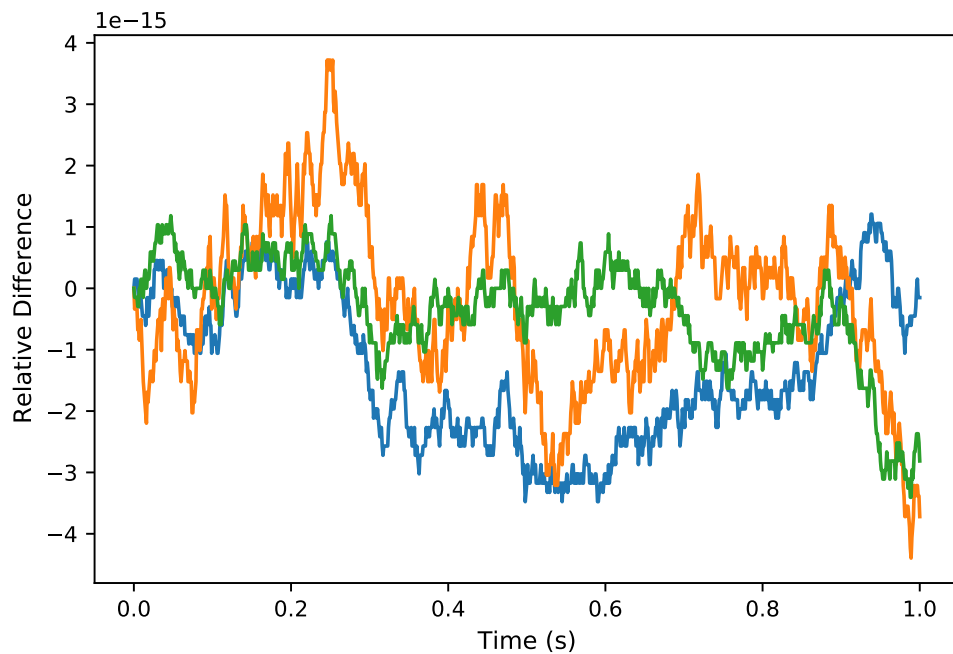


Fig. 2: Change in Orbital Angular Momentum System with Gravity

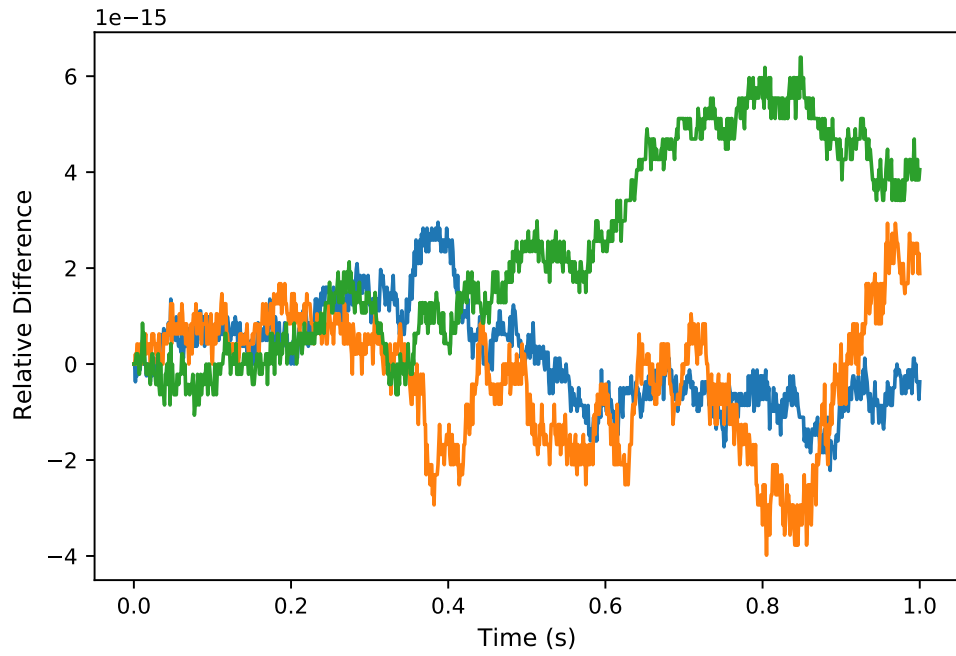


Fig. 3: Change In Rotational Angular Momentum System with Gravity

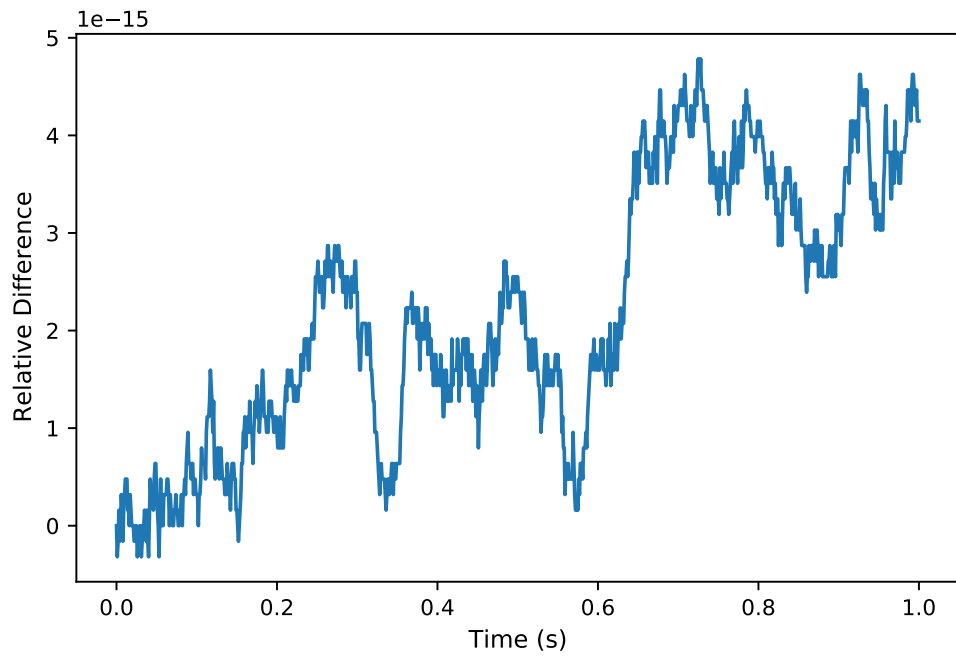


Fig. 4: Change In Rotational Energy System with Gravity

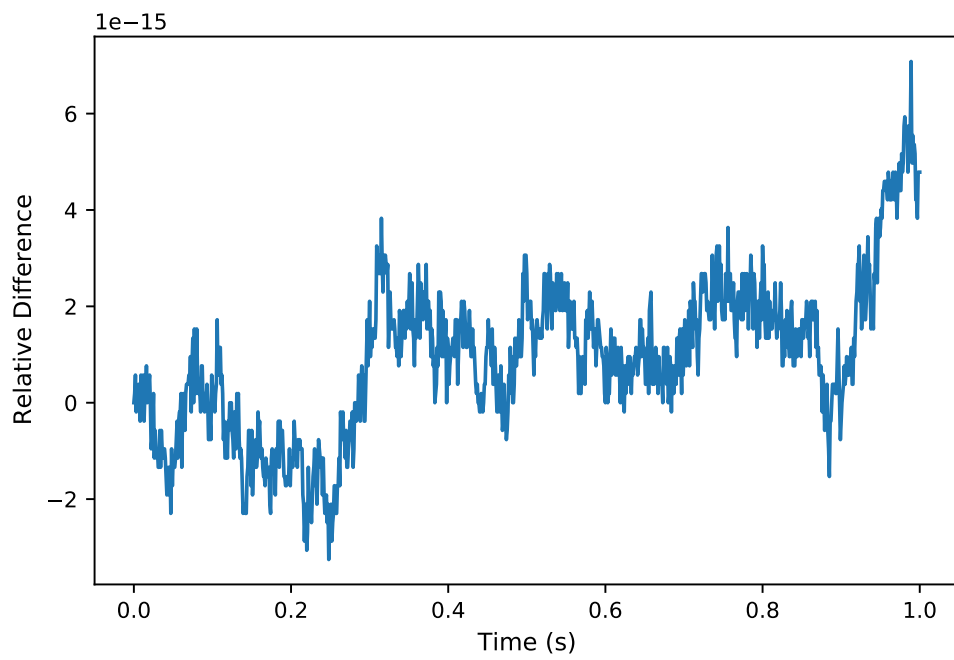


Fig. 5: Change in Orbital Energy System with Gravity

7.2 SCConnectedAndUnconnected Test

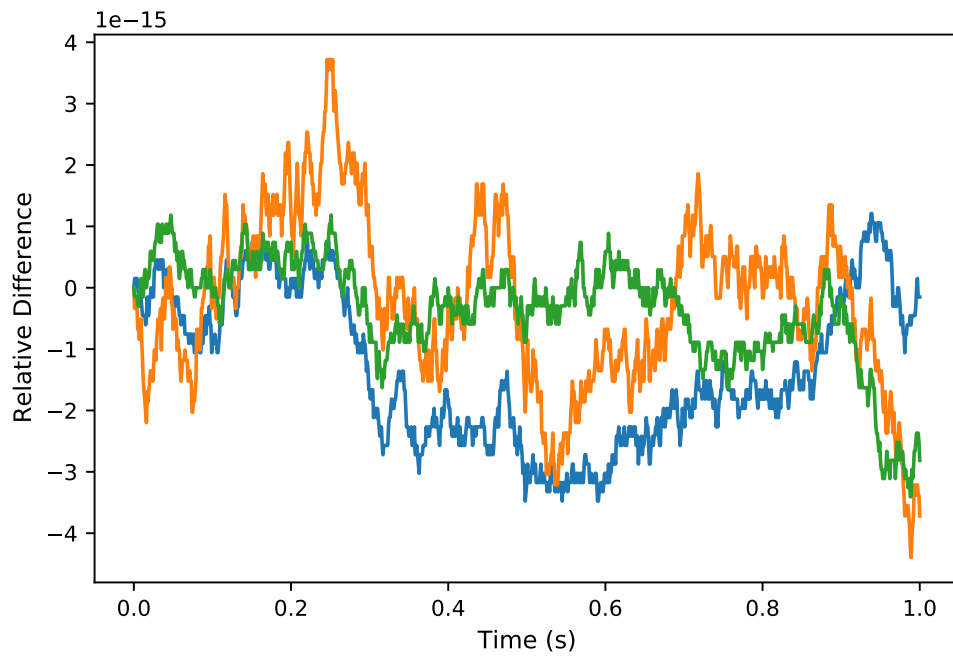


Fig. 6: Change in Orbital Angular Momentum System with Gravity

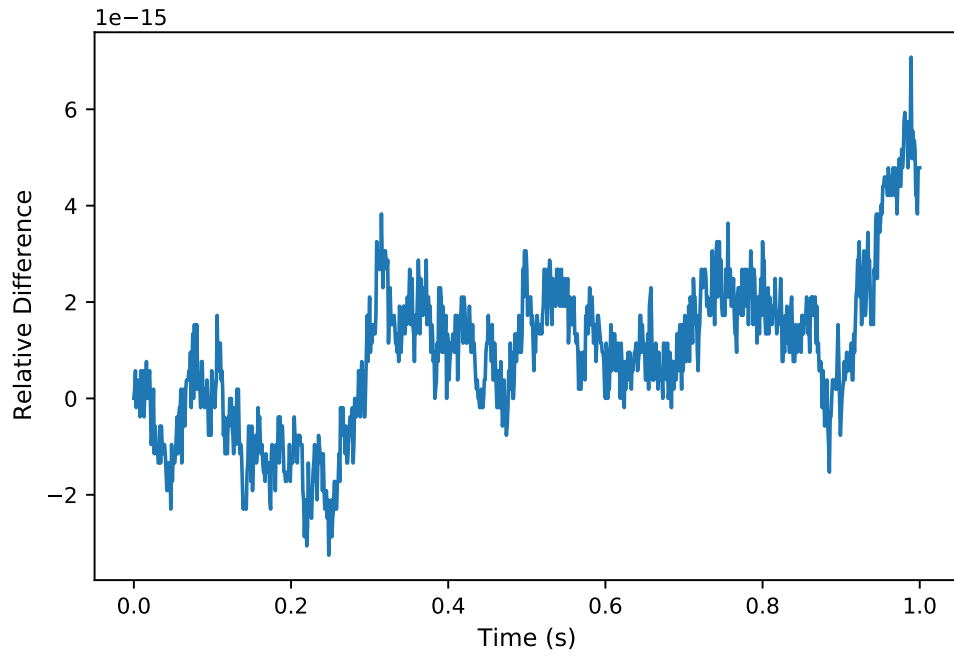


Fig. 7: Change in Orbital Energy System with Gravity

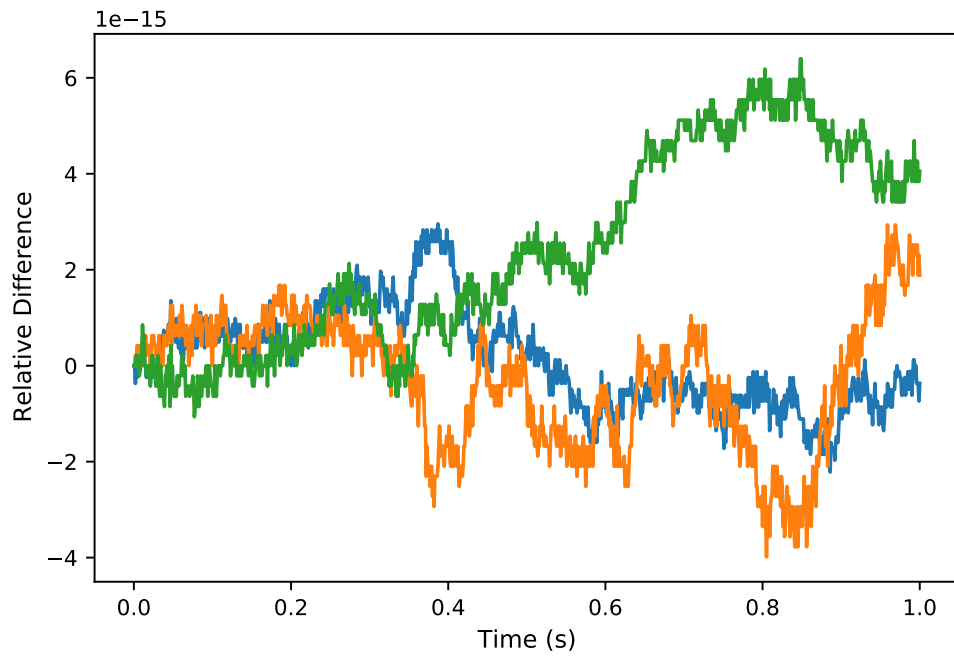


Fig. 8: Change In Rotational Angular Momentum System with Gravity

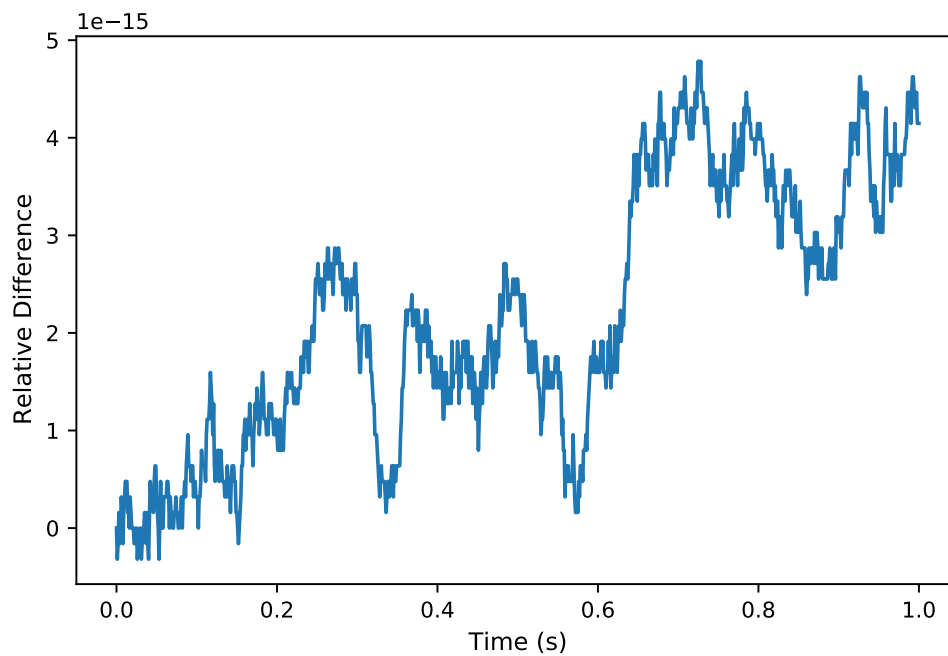


Fig. 9: Change In Rotational Energy System with Gravity

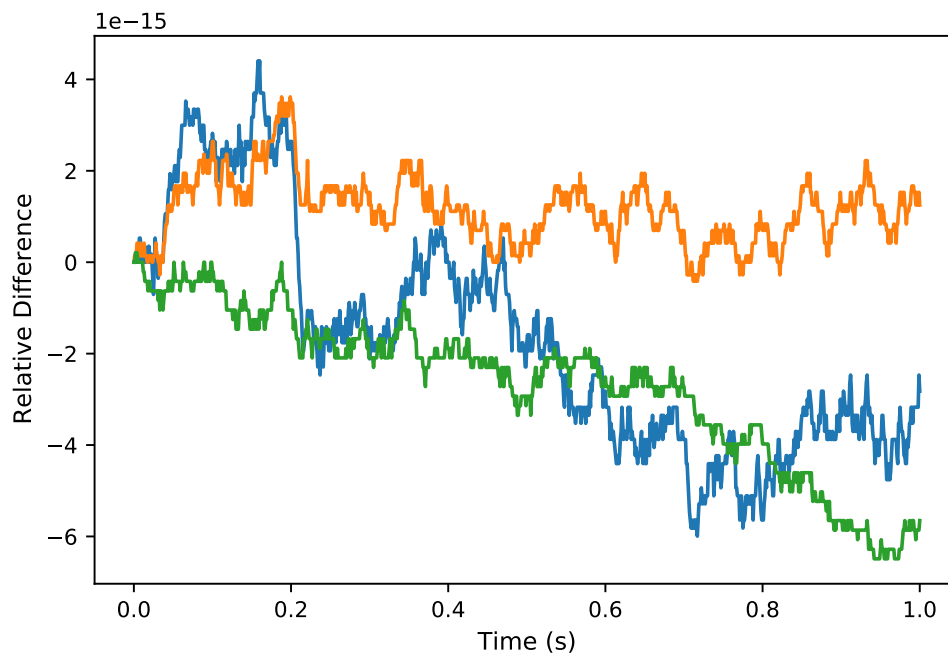


Fig. 10: Change in Orbital Angular Momentum SC 1 with Gravity

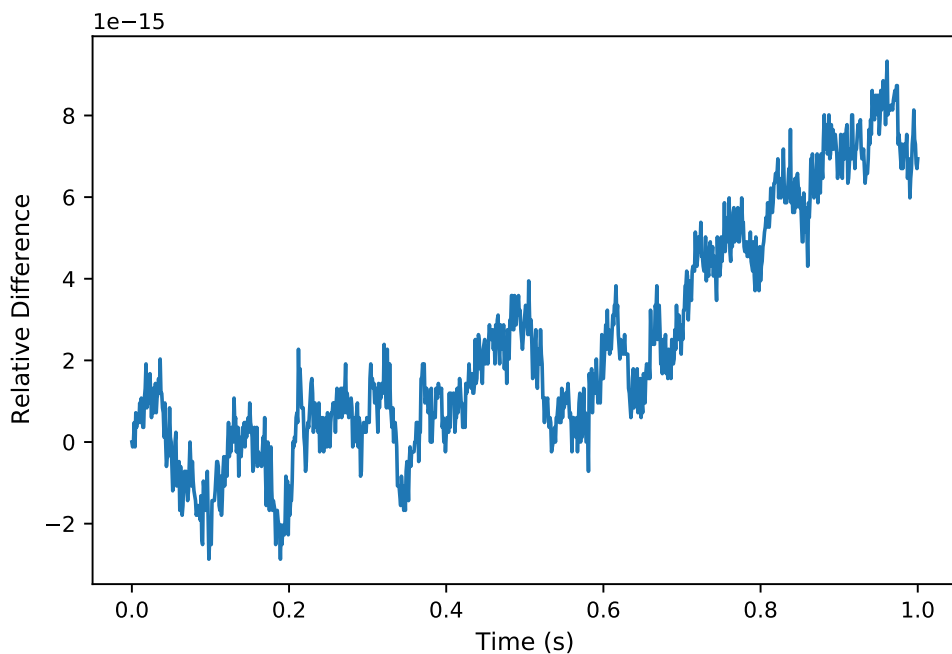


Fig. 11: Change in Orbital Energy SC 1 with Gravity

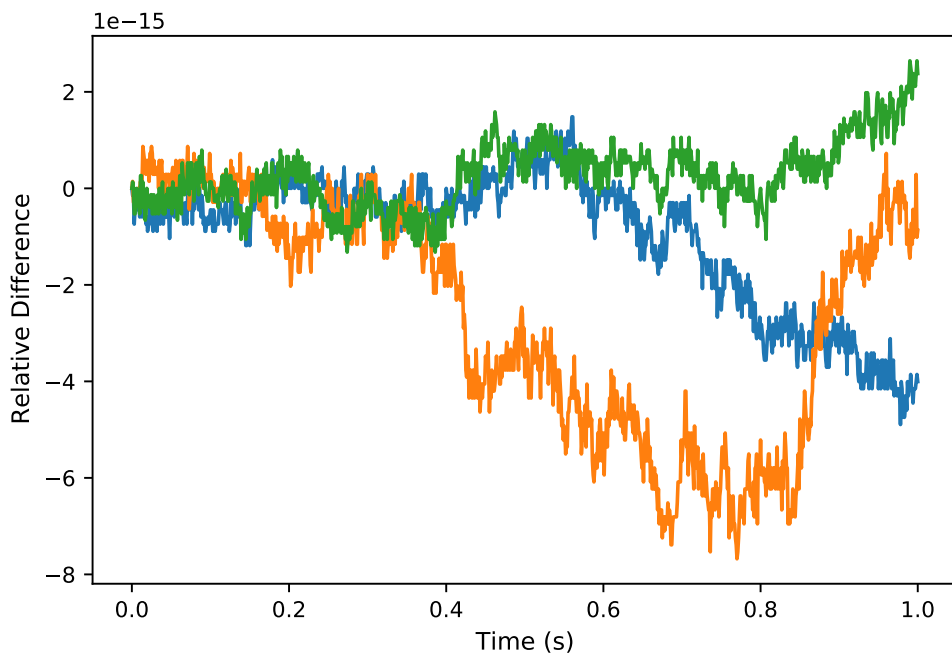


Fig. 12: Change In Rotational Angular Momentum SC 1 with Gravity

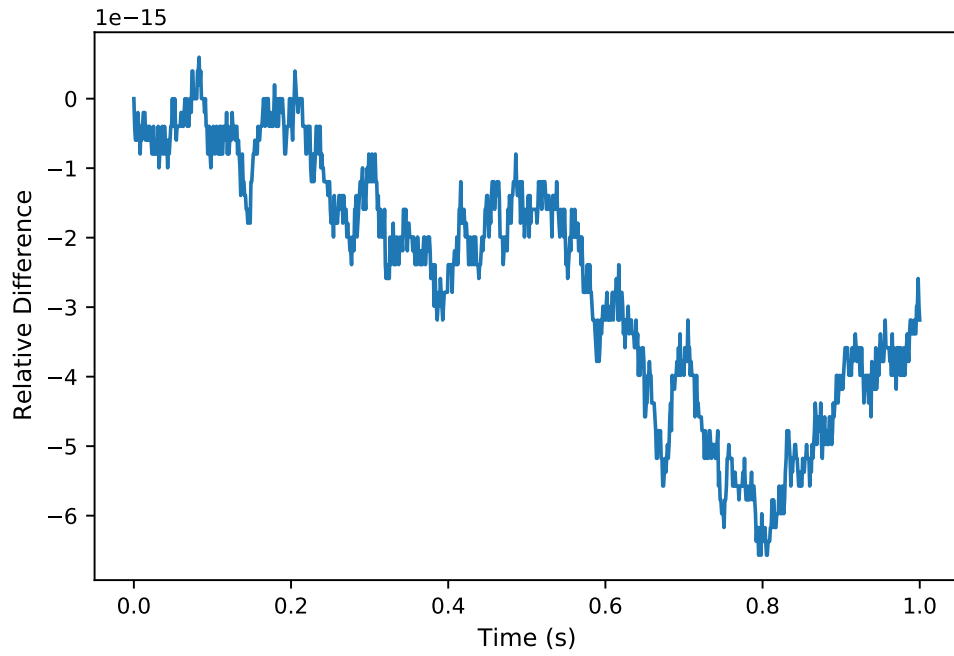


Fig. 13: Change In Rotational Energy SC 1 with Gravity

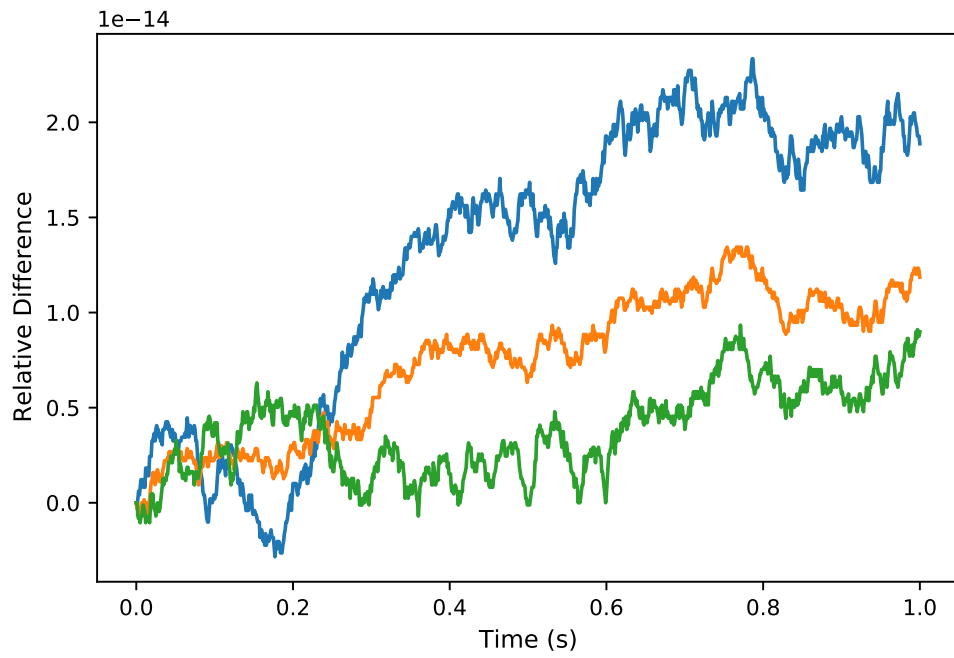


Fig. 14: Change in Orbital Angular Momentum SC 2 with Gravity

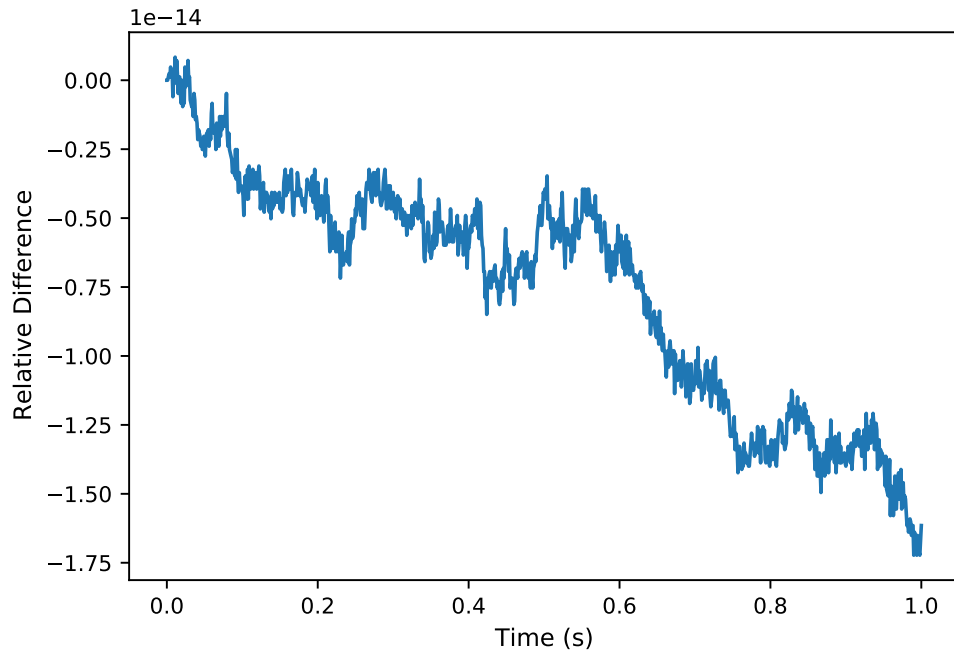


Fig. 15: Change in Orbital Energy SC 2 with Gravity

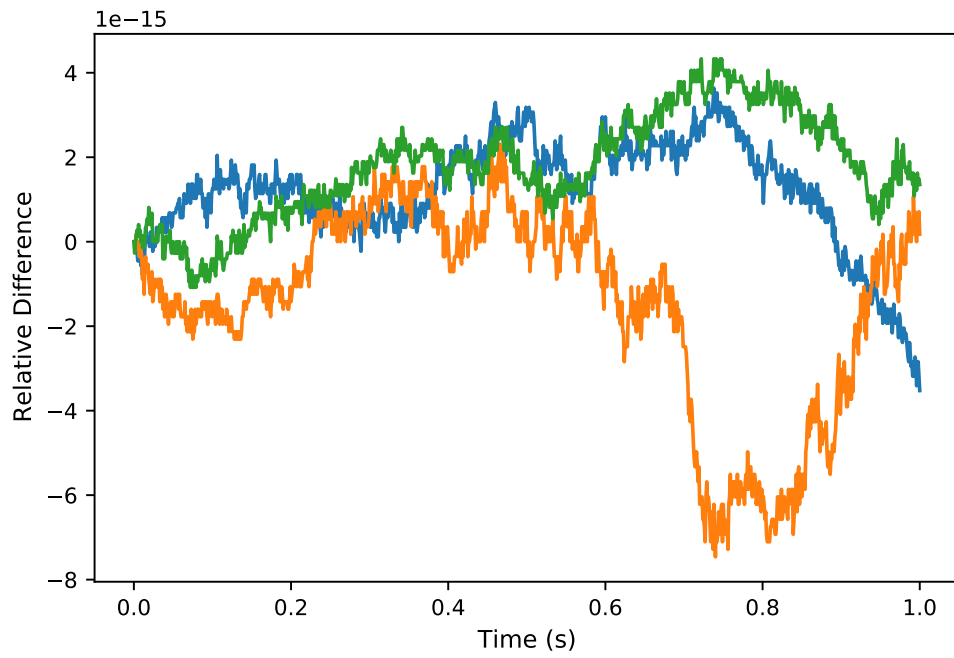


Fig. 16: Change In Rotational Angular Momentum SC 2 with Gravity

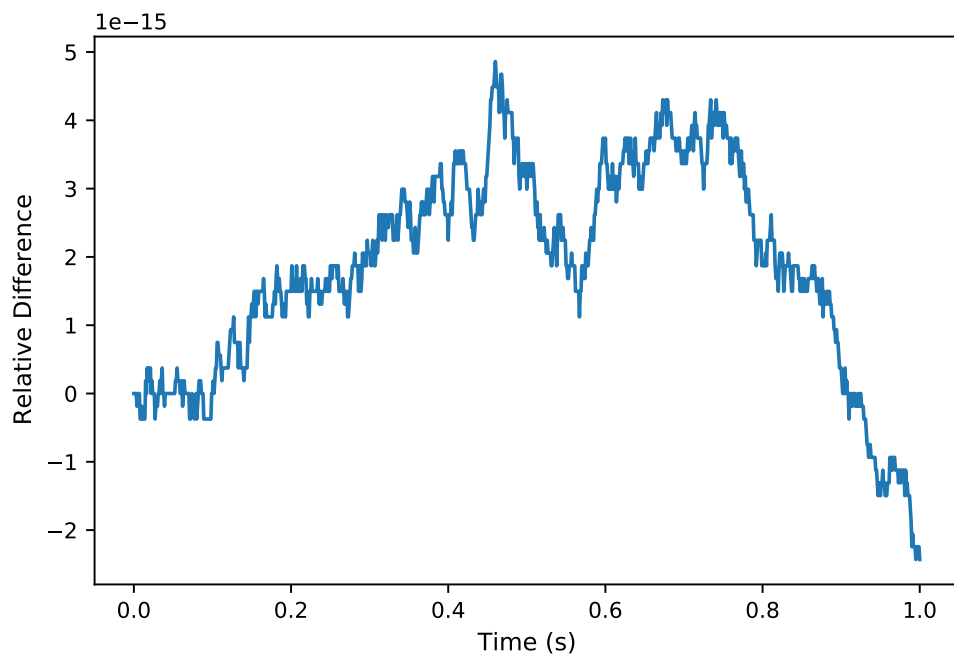


Fig. 17: Change In Rotational Energy SC 2 with Gravity

8 User Guide

This user guide will be updated further but please see the test: test_multiSpacecraft.

REFERENCES

- [1] C. Allard, Hanspeter Schaub, and Scott Piggott. General hinged solar panel dynamics approximating first-order spacecraft flexing. In *AAS Guidance and Control Conference*, Breckenridge, CO, Feb. 5–10 2016. Paper No. AAS-16-156.
- [2] Hanspeter Schaub and John L. Junkins. *Analytical Mechanics of Space Systems*. AIAA Education Series, Reston, VA, 3rd edition, 2014.